

The National Turfgrass Evaluation Program at UCR

S.T. Cockerham and S.B. Ries, Agricultural Operations University of California, Riverside

The National Turfgrass Evaluation Program (NTEP) is designed to develop and coordinate uniform evaluation trials of turfgrass varieties and promising selections in the United States and Canada. Test results can be used by national companies and plant breeders to determine the broad picture of the adaptation of a cultivar. Results can also be used to determine if a cultivar is well adapted to a local area or level of turf maintenance.

Information such as turfgrass quality, color, density, resistance to diseases and insects, tolerance to heat, cold, drought and traffic is collected and summarized by NTEP annually. Plant breeders, turfgrass researchers and extension personnel use NTEP data to identify improved environmentally-sound turfgrasses. Local and state government entities, such as parks and highway departments, use NTEP for locating resource-efficient varieties. Most important, growers and consumers use NTEP extensively to purchase drought tolerant, pest resistant, attractive and durable seed or sod. It is the acceptance by the end-user that has made NTEP the standard for turfgrass evaluation in the U.S.A. and many other countries worldwide.

NTEP is a cooperative effort between the non-profit National Turfgrass Federation, Inc., and the United States Department of Agriculture (USDA). NTEP is headquartered at the Beltsville Agricultural Center (BARC) in Beltsville, Maryland U.S.A.

NTEP tests are initiated, established, maintained and evaluated using standardized testing protocols. Data is collected across the U.S.A. and Canada by university researchers using standard procedures and formats. Data is submitted to NTEP, computer formatted and statistically analyzed. Annual progress reports are produced for each species tested and at the end of the testing period, a final summary report is produced. NTEP reports can be found at <http://www.ntep.org/>.

At UCR there are four current NTEP studies:

entries		date planted
National Tall Fescue	113	Aug 06
National Bermudagrass	31	June 07
National Seashore <i>Paspalum</i>	6	June 07
National Zoysiagrass	11	June 07

AG Sod Company has generously helped support the care of the plots in the UCR NTEP program in 2007 and 2008.

**2006 NTEP Tall Fescue Trial
(12E-1,5,9)**



12E-9

100	109	40	31	61	103	91	50	11	32
4	65	86	24	25	95	96	111	73	38
93	70	57	9	89	27	64	53	112	43
20	30	21	10	74	19	26	22	56	108
49	52	84	60	72	8	78	62	80	42
14	77	5	6	68	37	82	39	113	28
2	44	17	16	1	79	36	35	66	18
90	63	13	34	88	98	106	23	45	46
97	54	101	105	76	87	15	59	7	3
110	47	58	71	92	48	51	69	41	67
99	107	83	75	94	12	102	29	81	33
104	55	85							

**2006 NTEP Tall Fescue Trial
(12E-1,5,9)**



12E-5

1	2	3	4	5	6	7	8	9	10
11	12	13	14	15	16	17	18	19	20
21	22	23	24	25	26	27	28	29	30
31	32	33	34	35	36	37	38	39	40
41	42	43	44	45	46	47	48	49	50
51	52	53	54	55	56	57	58	59	60
61	62	63	64	65	66	67	68	69	70
71	72	73	74	75	76	77	78	79	80
81	82	83	84	85	86	87	88	89	90
91	92	93	94	95	96	97	98	99	100
101	102	103	104	105	106	107	108	109	110
111	112	113							

**2006 NTEP Tall Fescue Trial
(12E-1,5,9)**



12E-1

42	66	111	23	65	13	69	95	99	43
103	50	8	49	110	109	45	88	52	48
72	101	68	19	100	44	78	75	113	73
25	105	92	41	7	67	59	24	79	96
85	77	70	83	57	35	76	9	61	97
62	33	106	46	74	30	51	34	98	28
39	5	36	102	54	56	112	2	90	94
84	26	15	10	107	86	47	14	27	87
16	32	53	22	37	4	12	38	93	104
82	6	58	60	80	18	108	89	29	55
17	71	21	63	11	1	3	64	91	20
31	81	40							

Entry		Entry		Entry		Entry	
1	KY-31	31	Toccoa	61	BAR Fa 6253	91	Darlington
2	Spyder	32	Terrier	62	Talladega	92	KZ-1
3	Bravheart	33	Raptor II	63	Tahoe II	93	Renovate
4	Umbrella	34	Aggressor	64	06-WALK	94	Compete
5	Cannavaro	35	Essential	65	Escalade	95	Hudson
6	Greenbrooks	36	Fat Cat	66	06-DUST	96	Reunion
7	Plato	37	IS-TF-161	67	Honky Tonk	97	GWTF
8	Lindbergh	38	MVS-341	68	PSG-85QR	98	KZ-2
9	Aristotle	39	MVS-1107	69	STR-8GRQR	99	AST9002
10	Einstein	40	Titanium	70	PSG-82BR	100	AST9001
11	Silverado	41	Firecracker	71	Faith	101	RNP
			LS				
12	Monet	42	M4	72	GO-1BFD	102	AST-4
13	Cezanne Rz	43	0312	73	SR 8650	103	AST 7003
14	Van Gogh	44	PSG-TTST	74	STR-8BB5	104	AST9003
15	Ninja 3	45	Col-1	75	Tulsa Time	105	J-140
16	Cochise IV	46	J-130	76	PSG-RNDR	106	ATF-1199
17	RK 4	47	Corona	77	PSG-TTRH	107	Justice
18	RK 5	48	Crossfire 3	78	Speedway	108	Rebel IV
19	GE-1	49	Hunter	79	Rembrandt	109	3rd
20	SC-1	50	Biltmore	80	JT-41	110	Traverse
							SPR
21	ATF 1328	52	Padre	81	JT-36	111	Rhambler
							SPR
22	Skyline	52	Magellan	82	JT-45	112	Firenza
23	Hemi	53	Catelist	83	JT-42	113	Falcon IV
24	Turbo RZ	54	Stetson II	84	JT-33		
25	Turbo	55	Finelawn	85	BGR-TF1		
			Xpress				
26	Bullseye	56	Falcon NG	86	BGR-TF2		
27	Trio	57	Shenandoah	87	Gazelle II		
			Elite				
28	Sidewinder	58	Falcon V	88	Wolfpack II		
29	Rocket	59	Shenandoah	89	AST 7002		
			III				
30	Jamboree	60	BAR Fa	90	AST 7001		
			6363				

**2007 NTEP Bermudagrass Trial
(12E-19)**



12E-19

8	5	16	13	23	24	7	28
11	27	17	15	6	18	14	1
4	9	3	30	12	20	21	10
2	25	29	19	31	22	26	13
23	8	30	19	22	16	1	27
12	17	14	10	28	25	24	15
3	11	20	2	5	31	29	9
26	6	4	21	7	18	15	24
21	18	12	17	10	11	6	20
22	23	27	28	2	5	16	8
25	19	29	7	30	31	26	4
13	9	14	1	3			

2007 NTEP Bermudagrass Trial
(12E-19)

Entry	
1.	Riviera
2.	Princess 77
3.	NuMex- Sahara
4.	SWO-1070
5.	SWI-1081
6.	SWI-1083
7.	SWI-1113
8.	SWI-1117
9.	SWI-1122
10.	Midlawn
11.	Tifway
12.	Premier
13.	SWI-1057
14.	BAR 7CD5
15.	PST-R6FLT
16.	Sunspart
17.	Patriot
18.	OKC 1119
19.	OKC 1134
20.	RAD-CD1
21.	OKS 2004-2
22.	PSG 91215
23.	PSG 94524
24.	IS-01-201
25.	Pyramid 2
26.	Hollywood
27.	Yukon
28.	Veracruz
29.	PSG 9BAN
30.	PSG PROK
31.	PSG 9Y2OK

**2007 NTEP Zoysiagrass Trial
(12E-18S)**

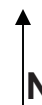


5	3	6	1	10	9	4
2	7	8	11	7	2	1
5	6	10	8	3	9	4
11	3	4	8	10	7	6
2	11	5	1	9		

Entry

- 1 Zenith
- 2 Meyer
- 3 Zorro
- 4 DALZ 0501
- 5 DALZ 0701
- 6 DALZ 0702
- 7 Shadowturf
- 8 L1F
- 9 29-2
- 10 240
- 11 380-1

**2007 NTEP *Paspalum vaginatum* Trial
(12E-18N)**



5	6	2	4	3	1	3
6	1	5	2	4	5	4
6	1	3	2			

entry

- 1 Salam
- 2 Sea Isle 1
- 3 SRX
9HSCP
- 4 UGA 7
- 5 Uga 22